

## Specifications

---

**Cable Length:**

10 ft/3 m-up to 1000 lb 30 x 30 in  
20 ft/6 m 1000 lb and above 36 x 36 in

**Operating Temperature:**

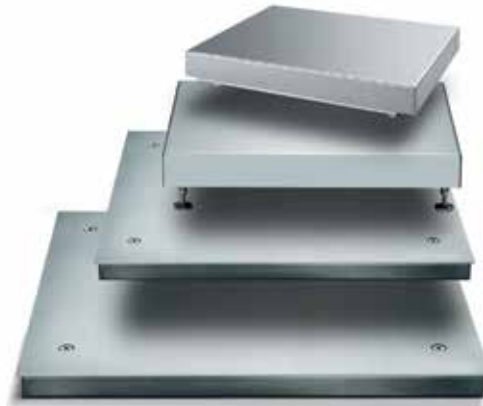
14° F to 104° F (-10° C to 40° C)

**Height:**

Adjustable feet

**Warranty:**

Two-year limited warranty  
Accessories: One-year limited warranty



## Standard Features

---

- One or four load cells (as noted)
- Complete selection of pit frames for flush mounting available
- High resolution 30,000 d versions available
- Compatible with all Combics indicators
- Mild Steel Painted
- NEMA Type 4/IP65 protection rating
- 304 stainless steel platters
- Stainless Steel
- IP67/NEMA Type 4X-cell/IP68/4 cell systems
- 304 stainless steel
- Hermetically sealed, IP68 load cells

## Optional Configurations

---

- R2 - Electropolished 316T, stainless steel
- Ti - Pressure lift system
- Drive on ramps
- Pit frame

# Minebea Intec Combics

Painted/Stainless Steel

## Part Number/Price

| RLWS PN                | Minebea PN       | Dimensions      | Foot Adjustable Height | # Load Cells | Capacity Readability | Capacity Readability | Capacity Readability | Est. Weight | Price          |
|------------------------|------------------|-----------------|------------------------|--------------|----------------------|----------------------|----------------------|-------------|----------------|
| <b>Painted Steel</b>   |                  |                 |                        |              |                      |                      |                      |             |                |
| 102285                 | CAPP1U-10CC-LU   | 10 x 10 in      | 2.7 in - 3.6 in        | 1            | 15 lb                | 0.0005               | 6 kg                 | 0.0002      | 14 lb Consult  |
| 102286                 | CAPP1U-20CC-LU   | 10 x 10 in      | 2.7 in - 3.6 in        | 1            | 30 lb                | 0.001                | 15 kg                | 0.0005      | 14 lb Consult  |
| 102287                 | CAPP1U-50CC-LU   | 10 x 10 in      | 2.7 in - 3.6 in        | 1            | 60 lb                | 0.002                | 30 kg                | 0.001       | 14 lb Consult  |
| 102288                 | CAPP1U-50DD-LU   | 12 x 12 in      | 3.6 in - 4.5 in        | 1            | 60 lb                | 0.002                | 30 kg                | 0.001       | 18 lb Consult  |
| 102291                 | CAPP1U-100DD-LU  | 12 x 12 in      | 3.6 in - 4.5 in        | 1            | 150 lb               | 0.005                | 60 kg                | 0.002       | 18 lb Consult  |
| 102289                 | CAPP1U-50EE-LU   | 18 x 18 in      | 3.5 in - 4.4 in        | 1            | 60 lb                | 0.002                | 30 kg                | 0.001       | 64 lb Consult  |
| 102292                 | CAPP1U-100EE-LU  | 18 x 18 in      | 3.5 in - 4.4 in        | 1            | 150 lb               | 0.005                | 60 kg                | 0.002       | 64 lb Consult  |
| 102297                 | CAPP1U-200EE-LU  | 18 x 18 in      | 3.5 in - 4.4 in        | 1            | 200 lb               | 0.01                 | 100 kg               | 0.005       | 64 lb Consult  |
| 102294                 | CAPP1U-100GG-LU  | 24 x 24 in      | 5.7 in - 6.7 in        | 1            | 150 lb               | 0.005                | 60 kg                | 0.002       | 121 lb Consult |
| 102299                 | CAPP1U-250GG-LU  | 24 x 24 in      | 5.9 in - 6.4 in        | 1            | 300 lb               | 0.01                 | 150 kg               | 0.005       | 121 lb Consult |
| 102302                 | CAPP1U-500GG-LU  | 24 x 24 in      | 5.7 in - 6.7 in        | 1            | 600 lb               | 0.02                 | 300 kg               | 0.01        | 121 lb Consult |
| 102296                 | CAPP1U-100HH-LU  | 30 x 30 in      | 5.71 in - 6.71 in      | 1            | 150 lb               | 0.005                | 60 kg                | 0.002       | 187 lb Consult |
| 102301                 | CAPP1U-250HH-LU  | 30 x 30 in      | 5.71 in - 6.71 in      | 1            | 300 lb               | 0.01                 | 150 kg               | 0.005       | 187 lb Consult |
| 102304                 | CAPP1U-500HH-LU  | 30 x 30 in      | 5.71 in - 6.71 in      | 1            | 600 lb               | 0.02                 | 300 kg               | 0.01        | 187 lb Consult |
| 102306                 | CAPP1U-1000HH-LU | 30 x 30 in      | 5.71 in - 6.71 in      | 1            | 1500 lb              | 0.05                 | 600 kg               | 0.02        | 187 lb Consult |
| <b>Pit Frames</b>      |                  |                 |                        |              |                      |                      |                      |             |                |
| 104313                 | YEG-HG-PUS       | 30 x 24 in (HG) |                        |              |                      |                      |                      |             | Consult        |
| 104314                 | YEG-HH-PUS       | 30 X 30 in (HH) |                        |              |                      |                      |                      |             | Consult        |
| 104315                 | YPF01KKP-MUS     | 36 x 36 in (KK) |                        |              |                      |                      |                      |             | Consult        |
| <b>Stainless Steel</b> |                  |                 |                        |              |                      |                      |                      |             |                |
| 102429                 | CAPS1U-10CC-LU   | 10 x 10 in      | 2.6 in - 3.4 in        | 1            | 15 lb                | 0.0005               | 6 kg                 | 0.0002      | 16 lb Consult  |
| 102430                 | CAPS1U-20CC-LU   | 10 x 10 in      | 2.6 in - 3.4 in        | 1            | 30 lb                | 0.001                | 15 kg                | 0.0005      | 16 lb Consult  |
| 102431                 | CAPS1U-50CC-LU   | 10 x 10 in      | 2.6 in - 3.4 in        | 1            | 60 lb                | 0.002                | 30 kg                | 0.001       | 16 lb Consult  |
| 102432                 | CAPS1U-50DD-LU   | 12 x 12 in      | 3.3 in - 4.4 in        | 1            | 60 lb                | 0.002                | 30 kg                | 0.001       | 24 lb Consult  |
| 102433                 | CAPS1U-100DD-LU  | 12 x 12 in      | 3.5 in - 4.4 in        | 1            | 150 lb               | 0.005                | 60 kg                | 0.002       | 24 lb Consult  |
| 102434                 | CAPS1U-50EE-LU   | 18 x 18 in      | 3.5 in - 4.4 in        | 1            | 60 lb                | 0.002                | 30 kg                | 0.001       | 62 lb Consult  |
| 102435                 | CAPS1U-100EE-LU  | 18 x 18 in      | 3.5 in - 4.4 in        | 1            | 150 lb               | 0.005                | 60 kg                | 0.002       | 62 lb Consult  |
| 102436                 | CAPS1U-200EE-LU  | 18 x 18 in      | 3.5 in - 4.4 in        | 1            | 200 lb               | 0.01                 | 100 kg               | 0.005       | 62 lb Consult  |
| 102458                 | CAPS4U-100GG-LU  | 24 x 24 in      | 3.4 in - 3.6 in        | 4            | 150 lb               | 0.005                | 60 kg                | 0.002       | 121 lb Consult |
| 102460                 | CAPS4U-250GG-LU  | 24 x 24 in      | 3.4 in - 3.6 in        | 4            | 300 lb               | 0.01                 | 150 kg               | 0.005       | 121 lb Consult |
| 102461                 | CAPS4U-500GG-LU  | 24 x 24 in      | 3.4 in - 3.6 in        | 4            | 600 lb               | 0.02                 | 300 kg               | 0.01        | 121 lb Consult |
| 102466                 | CAPS4U-100HH-LU  | 30 x 30 in      | 3.4 in - 3.6 in        | 4            | 150 lb               | 0.005                | 60 kg                | 0.002       | 187 lb Consult |
| 102467                 | CAPS4U-250HH-LU  | 30 x 30 in      | 3.4 in - 3.6 in        | 4            | 300 lb               | 0.01                 | 150 kg               | 0.005       | 187 lb Consult |
| 102468                 | CAPS4U-500HH-LU  | 30 x 30 in      | 3.4 in - 3.6 in        | 4            | 600 lb               | 0.02                 | 300 kg               | 0.01        | 187 lb Consult |
| 102469                 | CAPS4U-1000HH-LU | 30 x 30 in      | 3.4 in - 3.6 in        | 4            | 1500 lb              | 0.05                 | 600 kg               | 0.02        | 187 lb Consult |
| 102470                 | CAPS4U-1000KK-LU | 36 x 36 in      | 3.5 in                 | 4            | 1500 lb              | 0.05                 | 600 kg               | 0.02        | 250 lb Consult |
| 102471                 | CAPS4U-2500KK-LU | 36 x 36 in      | 3.5 in                 | 4            | 3000 lb              | 0.1                  | 1500 kg              | 0.05        | 250 lb Consult |
| 102472                 | CAPS4U-5000KK-LU | 36 x 36 in      | 3.5 in                 | 4            | 6000 lb              | 0.2                  | 3000 kg              | 0.1         | 250 lb Consult |
| 102473                 | CAPS4U-1000NN-LU | 48 x 48 in      | 3.5 in                 | 4            | 1500 lb              | 0.05                 | 600 kg               | 0.02        | 390 lb Consult |
| 102474                 | CAPS4U-2500NN-LU | 48 x 48 in      | 3.5 in                 | 4            | 3000 lb              | 0.1                  | 1500 kg              | 0.05        | 390 lb Consult |
| 102475                 | CAPS4U-5000NN-LU | 48 x 48 in      | 3.5 in                 | 4            | 6000 lb              | 0.2                  | 3000 kg              | 0.1         | 390 lb Consult |
| <b>Pit Frames</b>      |                  |                 |                        |              |                      |                      |                      |             |                |
| 104320                 | YEG-HG-SUS       | 30 x 24 in (HG) |                        |              |                      |                      |                      |             | Consult        |
| 104322                 | YEG-HH-SUS       | 30 X 30 in (HH) |                        |              |                      |                      |                      |             | Consult        |
| 104323                 | YPF01KKT-MUS     | 36 x 36 in (KK) |                        |              |                      |                      |                      |             | Consult        |
| 104324                 | YPF01NNT-MUS     | 48 x 48 in (NN) |                        |              |                      |                      |                      |             | Consult        |

PRECISION INDUSTRIAL WEIGHING

www.ricelake.com | Phone: 800-472-6703

RICE LAKE